

PART OF THE WEST HALF OF SECTION 6, T.6N., R.1W., S.L.B. & M.  
REDFORD ESTATES SUBDIVISION NO. 1 AMENDED

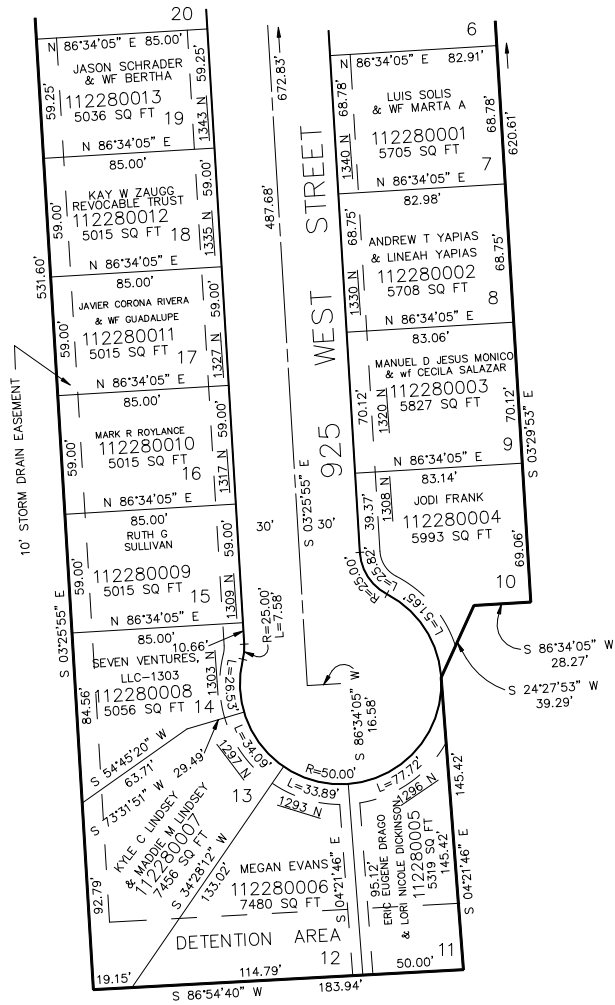
IN OGDEN CITY  
SCALE 1" = 50'

TAXING UNIT: 25

SEE PAGE 227

SEE PAGE 22

SEE PAGE 22



SEE PAGE 22

FOR COMPLETE ENG DATA SEE  
ORIGINAL DEDICATION PLAT IN  
BOOK 42, PAGE 5 OF RECORDS.

FOR AMENDED DEDICATION PLAT  
SEE BOOK 44, PAGE 99 OF RECORDS.